

Frozen Kingdom - Art

Vocabulary

Word	Definition
Composition	The way different elements are arranged in the
subject	The main object featured in the image
framing	Framing the subject matter helps to draw attention to the main focus of the
Truism	Based on fact, something that is completely true
Still life	A collection of inanimate objects (things that are not living) arranged in a spe-
Proportion	The size of an object in relation to other objects
Balance	The even spreading of objects and shapes on the
Shading	A way of showing tone in the object
Tone	The lightness/darkness of a shape
Viewfinder	An area of a picture selected to focus upon

Previous Knowledge

In previous years, you have:

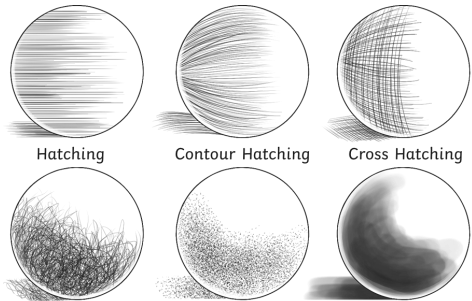
- Used sketchbooks to record, review, revisit and evaluate ideas. Improved mastery of techniques such as drawing, painting and sculpture with varied materials and researched famous artists

- Used sketchbooks to record, review, revisit and evaluate ideas. Improved mastery of techniques such as drawing, painting and sculpture with varied materials and researched famous artists

Art Key Concepts

Composition	Evaluate	Photograph	
Expression	Critique	Compare	

Texture using line and tone

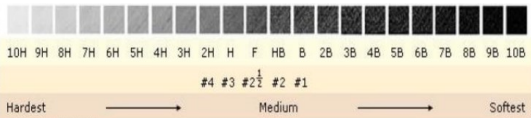


The diagram shows six circular examples of shading techniques:

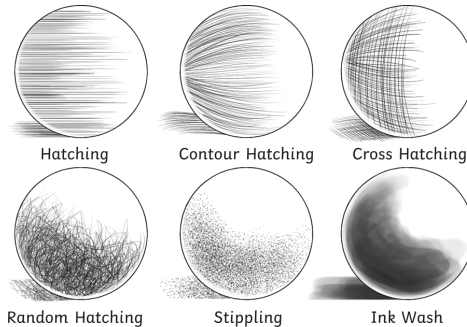
- Hatching:** Parallel lines of varying lengths and thicknesses.
- Contour Hatching:** Lines that follow the shape of the object, creating a sense of depth.
- Cross Hatching:** Two sets of parallel lines intersecting to create darker areas.
- Random Hatching:** Lines drawn in a random, overlapping manner.
- Stippling:** Small dots or stippling used to create texture and shading.
- Ink Wash:** A smooth, dark wash of ink used for shading.

Pencils come in a range of hardness:

- The **H** range is hard and light and useful for design and technical drawing
- The **B** range is soft and dark and more suitable for shading and tonal drawing



The diagram shows a pencil hardness scale from 10H to 10B. The scale is divided into three sections: Hardest (10H to 4H), Medium (4H to 10B), and Softest (10B to 10H). The pencils are arranged in a row, with their corresponding hardness labels below them. The labels are: 10H, 9H, 8H, 7H, 6H, 5H, 4H, 3H, 2H, H, F, HB, B, 2B, 3B, 4B, 5B, 6B, 7B, 8B, 9B, 10B. Below the labels, the numbers 4, 3, 2, 1 are shown, indicating the relative hardness of the pencils.



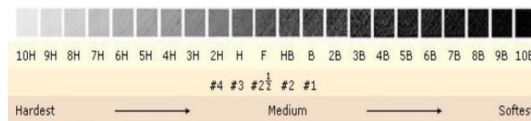
Pencils come in a range of hardness:

- The **H** range is hard and light and useful for design and technical drawing
- The **B** range is soft and dark and more suitable for shading and tonal drawing

10H 9H 8H 7H 6H 5H 4H 3H 2H H F HB B 2B 3B 4B 5B 6B 7B 8B 9B 10B

#4 #3 #2½ #2 #1

Hardest Medium Softest

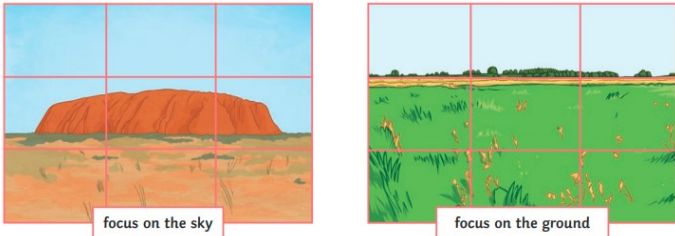


Rule of 3

When using the rule of thirds in photography, the image is divided into thirds using two horizontal lines and two vertical lines.

To create an eye catching composition, the subject matter is positioned according to the lines.

For example, when the horizon is photographed near to the top third line, the focus for the viewer is drawn to the ground; when the horizon is near to the bottom third line, the sky is the focal point of the image.



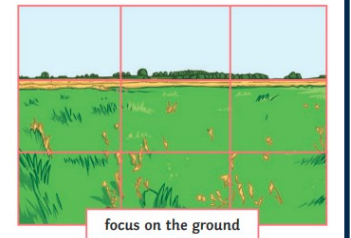
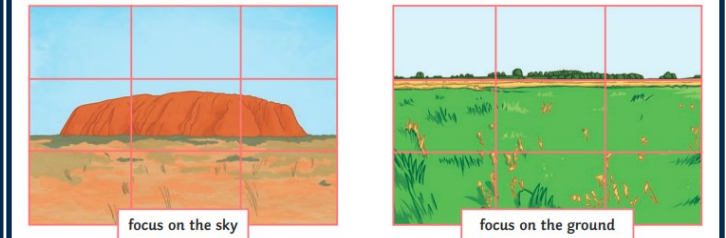
focus on the sky

focus on the ground

When using the rule of thirds in photography, the image is divided into thirds using two horizontal lines and two vertical lines.

To create an eye catching composition, the subject matter is positioned according to the lines.

For example, when the horizon is photographed near to the top third line, the focus for the viewer is drawn to the ground; when the horizon is near to the bottom third line, the sky is the focal point of the image.



Spellings: achieve apparent environment equipment lighting variety